

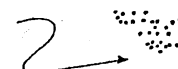
# Bone Sorting Chart

	RODENTS	SHREWS	MOLES	BIRDS
Skulls				
Jaws	  Loose Teeth			
Shoulder Blades				
Front legs				
Hips				
Hind Legs				
Assorted ribs				
Assorted vertebrae				

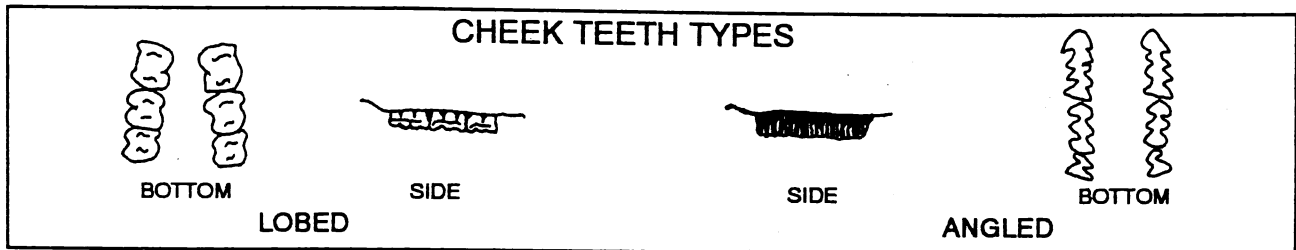
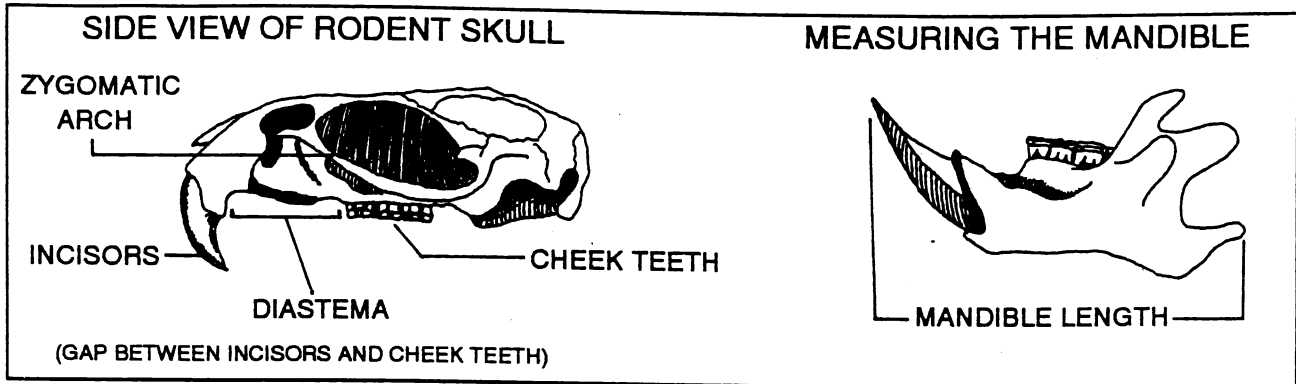
CATERPILLAR LARVAE AND COCOONS



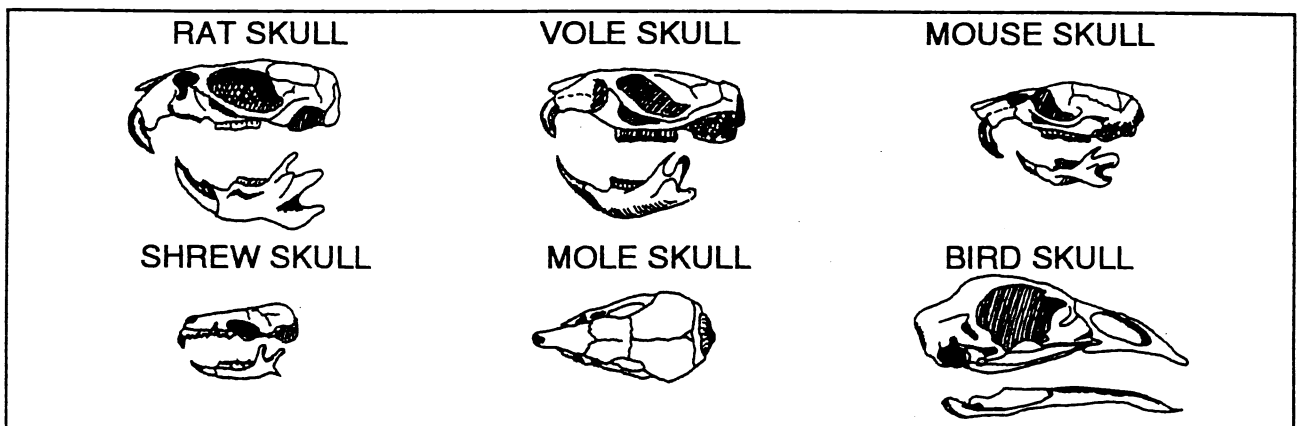
CATERPILLAR DROPPINGS



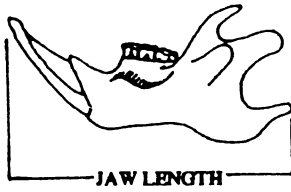
# KEY TO SKULLS OF COMMON BARN OWL PREY



- 1.a. Skull does not have teeth.....Bird
- b. Skull has teeth.....go to 2
  
- 2.a. Skull does not have a diastema .....go to 3
- b. Skull has a diastema.....go to 4
  
- 3.a. Skull does not have a zygomatic arch.....Shrew
- b. Skull has a zygomatic arch.....Mole
  
- 4.a. Cheek teeth are angled.....go to 5
- b. Cheek teeth are lobed.....go to 6
  
- 5.a. Mandible length 15-20 mm.....Vole
- b. Mandible length 25-35 mm.....Pocket Gopher
  
- 6.a. Mandible length 10-16 mm.....Mouse
- b. Mandible length 17-30 mm.....Rat



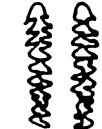
HOW TO MEASURE THE JAW



TOOTH TYPES



LOBED



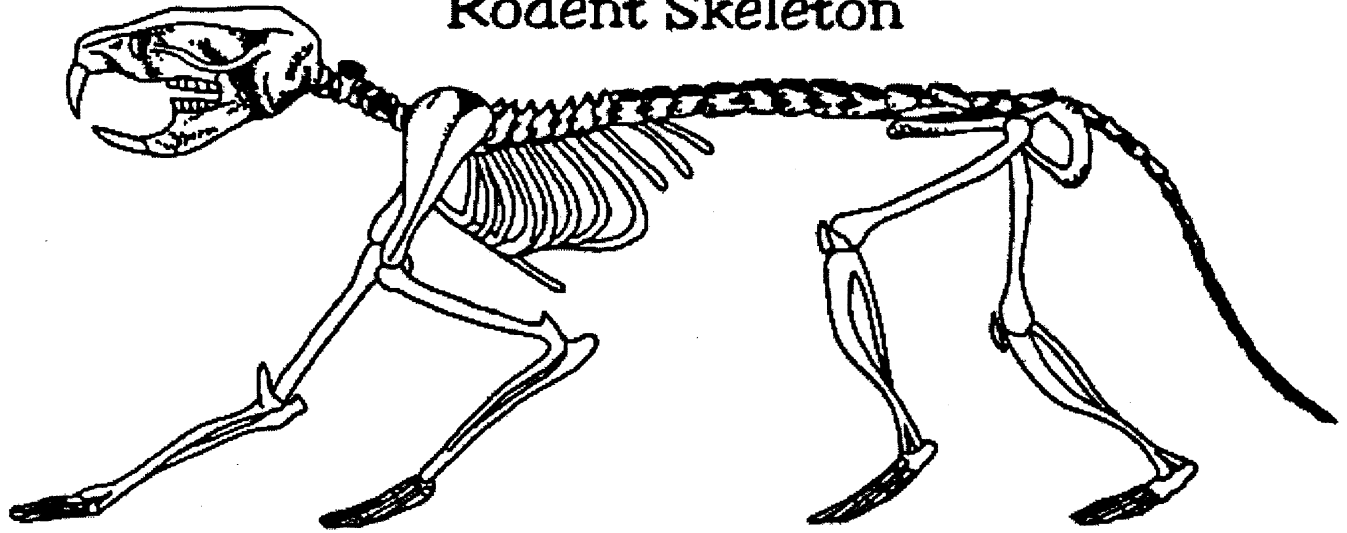
ANGLED



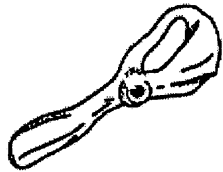
POINTED

	RAT	VOLE	MOUSE	SHREW	BIRD
SKULL AND JAW					
JAW LENGTH MILLIMETERS	17-30	15-20	10-15	7-14	15-40
TOOTH TYPE	LOBED	ANGLED	LOBED	POINTED	NONE
SHOULDER BLADE					
HIP					
UPPER LEG					
LOWER LEG					
RIB					
BACK BONES					
FOOT					

# Rodent Skeleton



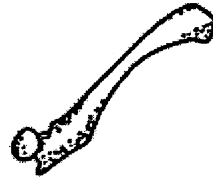
## Large Bones found in Owl Pellets



Pelvis



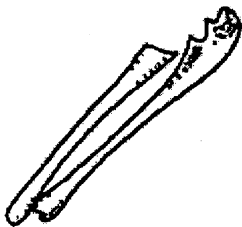
Humerus



Femur



Shoulder Blade



Ulna & Radius

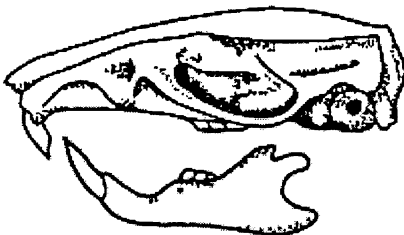


Tibia & Fibia



Ribs

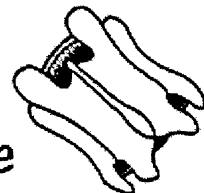
Skull



Lower Jaw



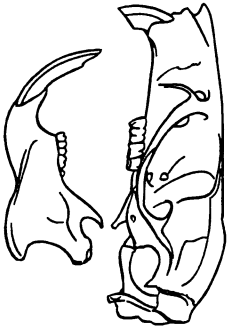
Vertebrae



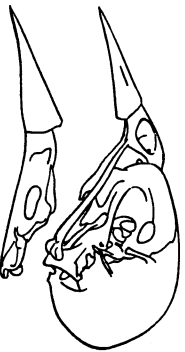
# Bone Chart



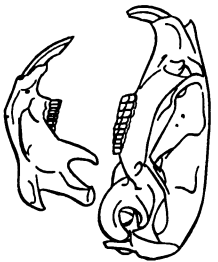
Shrew  
skull and jaw



Brown Rat  
skull and jaw



Red-winged Blackbird  
skull and jaw



Meadow Vole  
skull and jaw

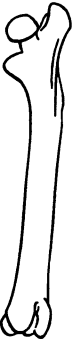


House Mouse  
skull and jaw

# Brown Rat Bones



pelvic bone



femur



humerus



tibia and fibula



rib



scapula

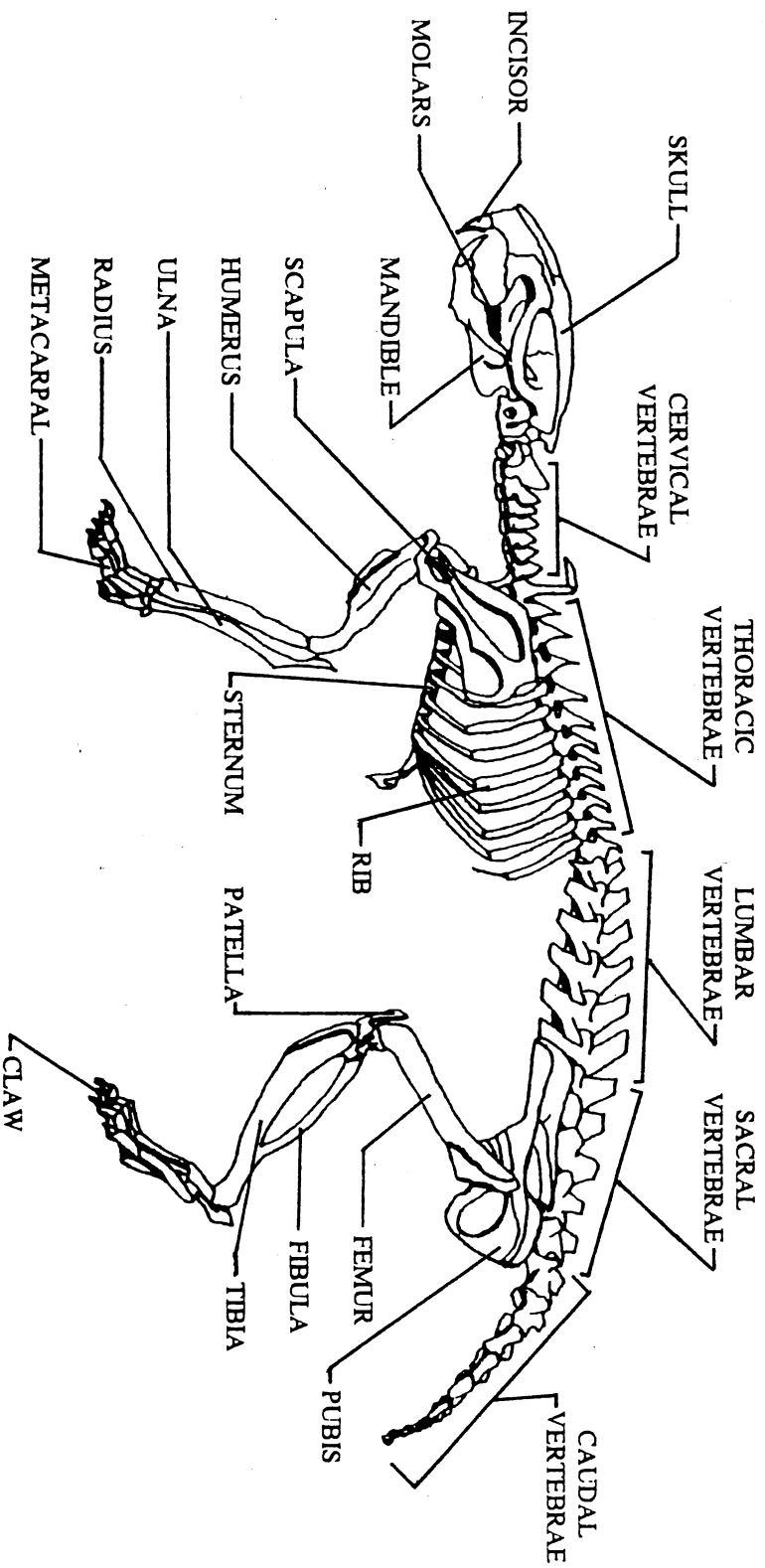


vertebrae



# VOLE

## SKELETAL ANATOMY



# SHREW SKELETON

